



GAT MONTHLY MEMBERSHIP PROGRESS REPORT

Results as of: 5/31/2026

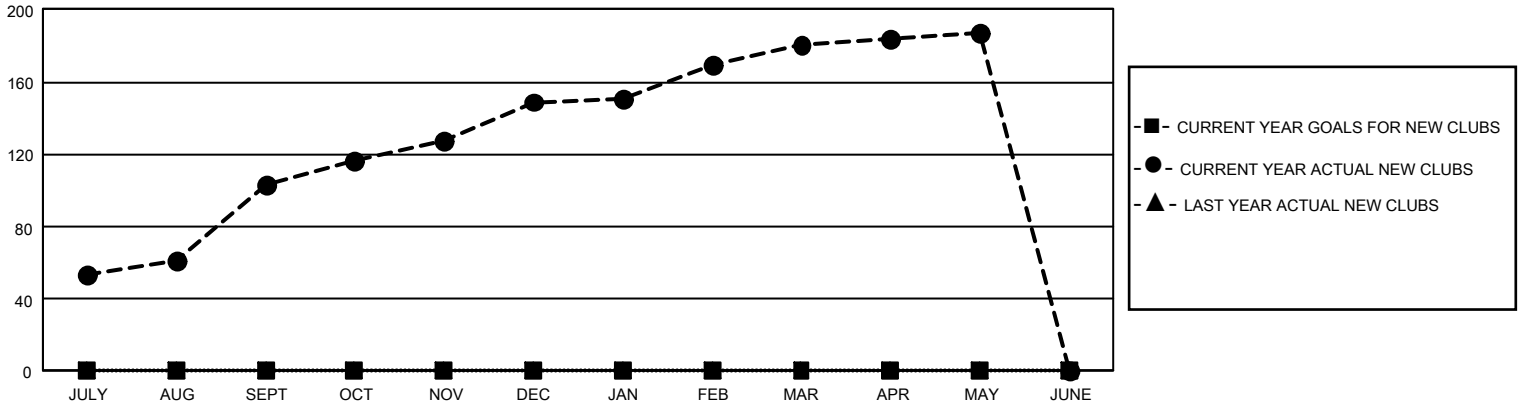
GMT Constitutional Area 6 - I, Group J

REPORT DOES NOT INCLUDE CLUBS IN UNDISTRICTED AREAS.

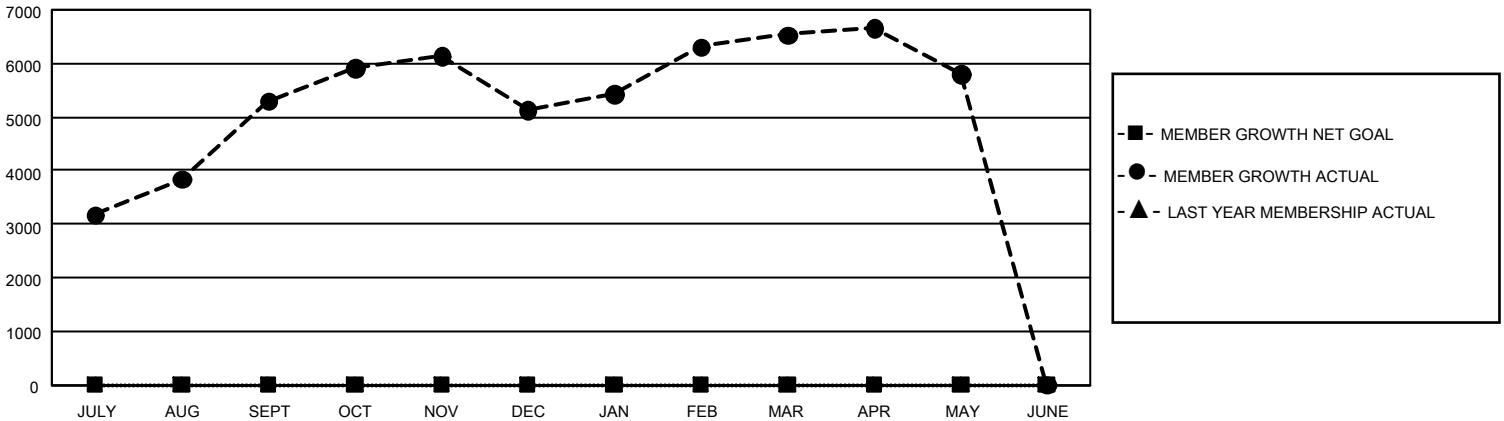
Clubs			
RESULTS FOR 2025-2026			
QUARTER	NEW CLUB GOAL	NEW CLUBS	DROPPED CLUBS
JULY/AUG/SEPT	0	103	21
OCT/NOV/DEC	0	46	44
JAN/FEB/MAR	0	32	16
APR/MAY/JUNE	0	6	5

Members			
RESULTS FOR 2025-2026			
QUARTER	MEMBER GROWTH NET GOAL	MEMBER GROWTH ACTUAL	DROPPED MEMBERS ACTUAL (including transfers)
JULY/AUG/SEPT	0	7,207	1,491
OCT/NOV/DEC	0	2,885	2,839
JAN/FEB/MAR	0	2,475	807
APR/MAY/JUNE	0	1,137	1,581

GOALS AND ACTUAL NEW CLUBS CUMULATIVE



GOALS AND ACTUAL MEMBERS CUMULATIVE



DROPPED CLUBS: 86	1,538 CLUBS OF 1,960 ADDED 1 OR MORE NEW MEMBERS	GENDER DISTRIBUTION	
		MALE 52,082 (81.32%) FEMALE 11,957 (18.67%) NON BINARY 2 (0.00%) PREFER NOT TO ANSWER 7 (0.01%)	
DROPPED MEMBERS		CLICK HERE FOR CUMULATIVE MEMBERSHIP DATA	TOTAL FAMILY UNIT MEMBERS 14,680
DECEASED 174 CLUB CANCELLED 1,387 OTHER 5,141 TOTAL 6,702	FAMILY MEMBERS PAYING HALF DUES 8,748		